



Tribeca Retail Space for Lease
Restored Cast Iron Store Front

94 READE
STREET

North Side | Second Store West of Church Street

CAST IRON ARCHITECTURE
EXPOSED BRICK INTERIOR
SELLING COMMERCIAL LOWER LEVEL

Ground – 1,452 SF

Comments

Lower Level – 972 SF

- New Storefront with ADA entrance

Sub Basement – 1,370 SF

- Legal Selling Lower Level

Frontage – 25-feet

- Delivery of Turn-key Retail

Ceiling Heights

13'-15' Ground

- Showroom / Retail / Medical /
Light Fitness / Professional Office

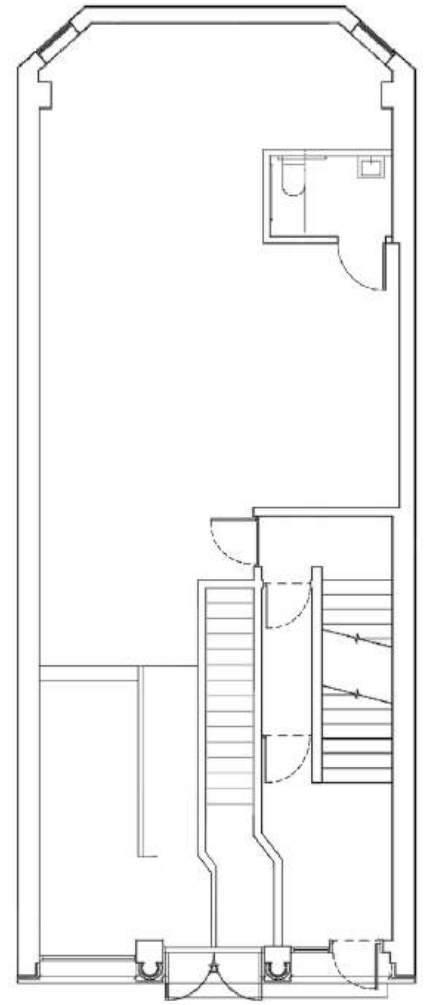
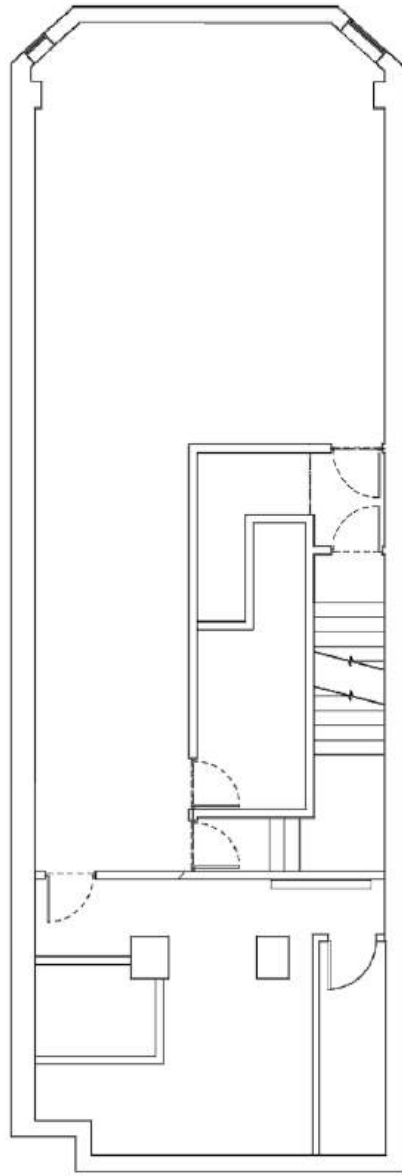
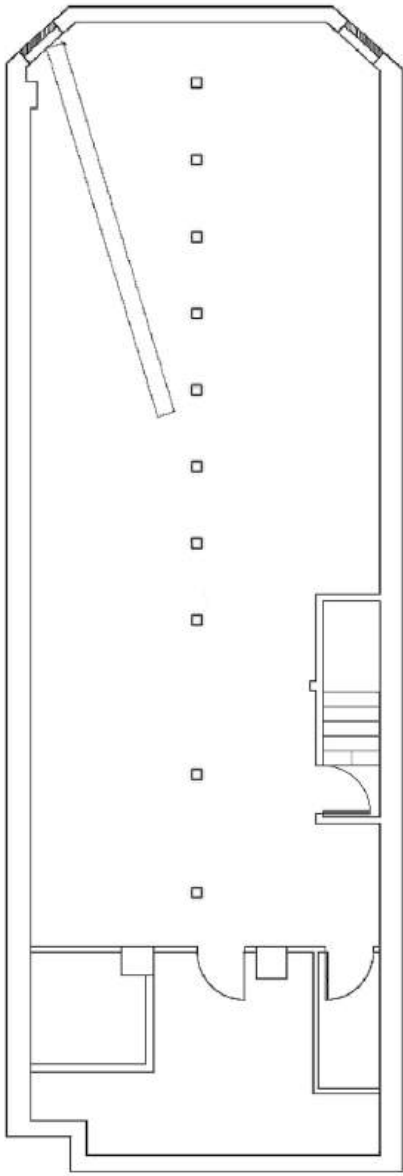
11' Lower Level

8' Sub Basement

- Sub-Basement Storage

Term – Negotiable





94 READE STREET

Please Contact:
Peter Weisman
212.300.3077
peter@weismannyc.com